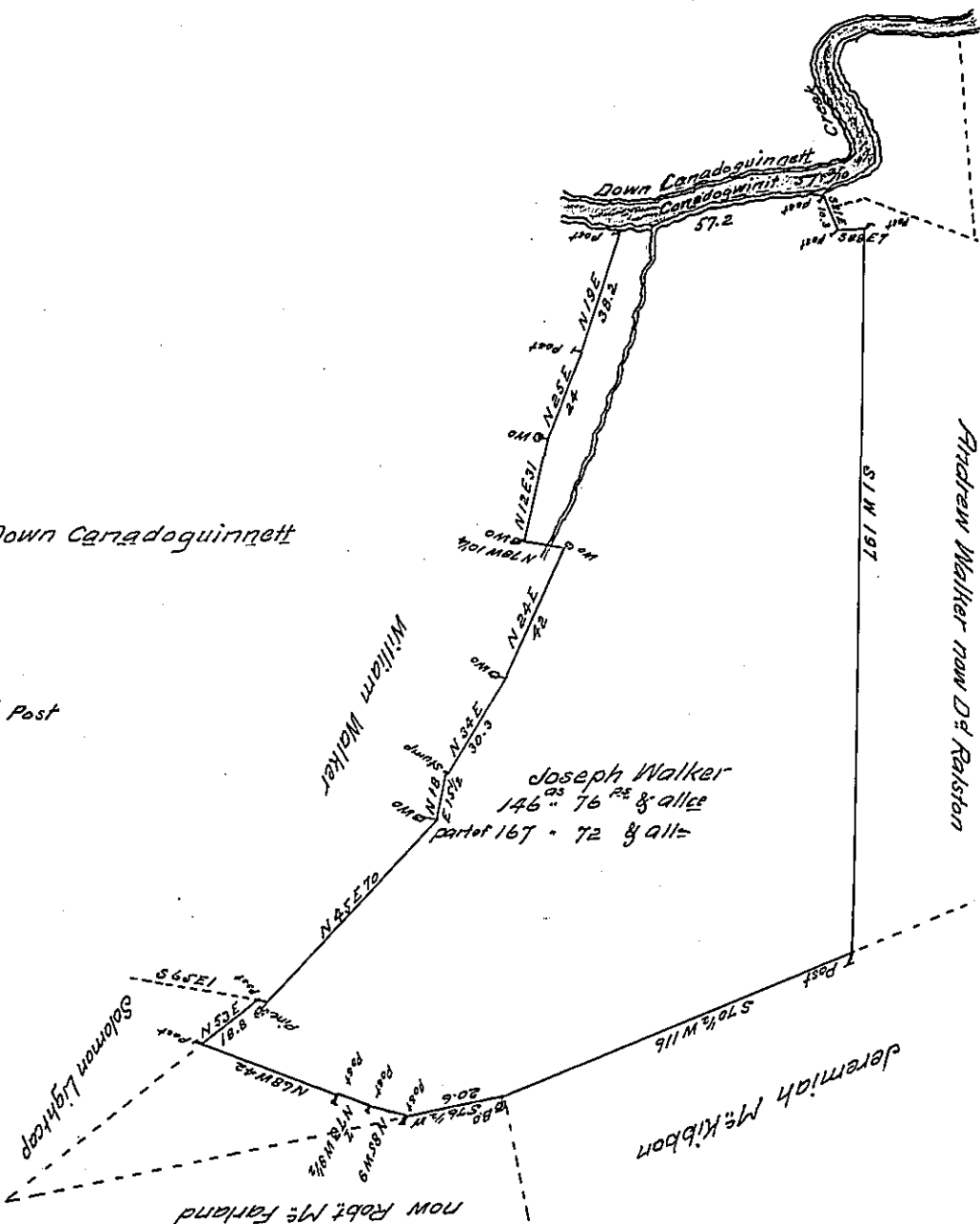


Courses & Distances Down Caradoguinnett  
Creek from the Post

S 78 E 12.5  
East 14.5  
N 74 1/2 E 30.2  
In all 57.2 to Post



The Draught of a tract of Land situate in Newtown Township Cumberland County containing one hundred & forty six acres & seventy six perches & allowance &c.c. It being part of a Larger tract originally Survey'd on a warrant to Joseph Walker Dated July 30<sup>th</sup> 1787 - Survey'd & Divided off the 1<sup>st</sup> Day of April 1803 -

To Sam<sup>l</sup> Cochran Esquire

Survey<sup>r</sup>. Gen<sup>l</sup> of Pennsylv<sup>a</sup>

W<sup>m</sup> Ramsey D.S.

IN TESTIMONY that the above is a copy of the original remaining on file in the Department of Internal Affairs of Pennsylvania, made conformably to an Act of Assembly approved the 16th day of February, 1833, I have hereunto set my Hand and caused the Seal of said Department to be affixed at Harrisburg, this seventh day of July 1908.

Henry Howard  
Secretary of Internal Affairs.